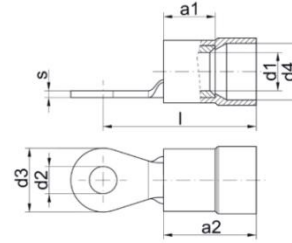


**Cu - Insulated Solderless Ring type terminals**

Total Cross section: 0.5 - 6 sq mm

Acc to DIN 46234

TIN plated to protect against corrosion.

**Material:** Cu - ETP & PVC sleeves


		Dimensions in mm								
cross section in Sq mm	Part no.	a1	b	d1	d2	d4	a2	l	S	packing qty
0.5 - 1	CT-2213	5	6	1.6	3.2	4.4	10.2	15.2	0.8	100 nos.
	CT-22135	5	8	1.6	3.7	4.4	10.2	15.2	0.8	100 nos.
	CT-2214	5	8	1.6	4.2	4.4	10.2	17.2	0.8	100 nos.
	CT-2215	5	10	1.6	5.2	4.4	10.2	17.2	0.8	100 nos.
	CT-2216	5	12	1.6	6.4	4.4	10.2	19.2	0.8	100 nos.
1.5 - 2.5	CT-2223	5	8	2.3	3.2	5	10.6	15.6	0.8	100 nos.
	CT-22235	5	8	2.3	3.7	5	10.6	15.6	0.8	100 nos.
	CT-2224	5	8	2.3	4.2	5	10.6	17.6	0.8	100 nos.
	CT-2225	5	10	2.3	5.3	5	10.6	17.6	0.8	100 nos.
	CT-2226	5	12	2.3	6.3	5	10.6	17.6	0.8	100 nos.
	CT-2228	5	14	2.3	8.4	5	10.6	19.6	0.8	100 nos.
	CT-22210	5	16	2.3	10.3	5	10.6	21.6	0.8	100 nos.
	CT-22212	5	18	2.3	13	5	10.6	25.6	0.8	100 nos.
4.0 - 6	CT-2234	6	8	3.5	4.2	6.5	13.7	21.7	1	100 nos.
	CT-2235	6	12	3.5	5.4	6.5	13.7	23.7	1	100 nos.
	CT-2236	6	12	3.5	6.4	6.5	13.7	23.7	1	100 nos.
	CT-2238	6	14	3.5	8.4	6.5	13.7	23.7	1	100 nos.
	CT-22310	6	14	3.5	10.4	6.5	13.7	25.7	1	100 nos.

**NOTE: Product Dimension and Standard Packing quantity can be changed without prior notice. For any customized products please contact us.**